



**Mersey Care**  
NHS Foundation Trust

Community and Mental Health Services

# Mersey Care in Halton September 2022

Mersey Care NHS Foundation Trust  
Presented by: Donna Robinson

# Overview:

- Introduction to Mersey Care
- Organisational Change
- Local structures
- Mersey Care Services within Halton
- Adult Mental Health Services
- Autism Assessment & Diagnostic Service
- Learning Disabilities
- IAPT services

# Board of Directors



**Mersey Care**  
NHS Foundation Trust

Community and Mental Health Services



**BEATRICE FRAENKEL**

Chairman



**JOE RAFFERTY**

Chief Executive



**ANYA AHMED**

Non-Executive Director



**SCOTT ETHERINGTON**

Non-Executive Director



**MURRAY FREEMAN**

Non-Executive Director



**AISLINN O'DWYER**

Non-Executive Director



**GERRY O'KEEFE**

Non-Executive Director



**NICK WILLIAMS**

Non-Executive Director



**VACANT**

Non-Executive Director



**VACANT**

Non-Executive Director



**TRISH BENNETT**

Executive Director of Nursing and Operations and Deputy Chief Executive of Clinical Services



**ELAINE DARBYSHIRE**

Executive Director of Communications, Corporate Governance and Estates



**LOUISE EDWARDS**

Executive Director of Strategy



**CHRIS LYONS**

Director of Strategic Programmes



**AMANDA OATES**

Executive Director of Workforce



**NOIR THOMAS**

Executive Medical Director



**ROB COLLINS**

Executive Director of Finance



**NEIL SMITH**

Deputy Chief Executive of Non Clinical Services



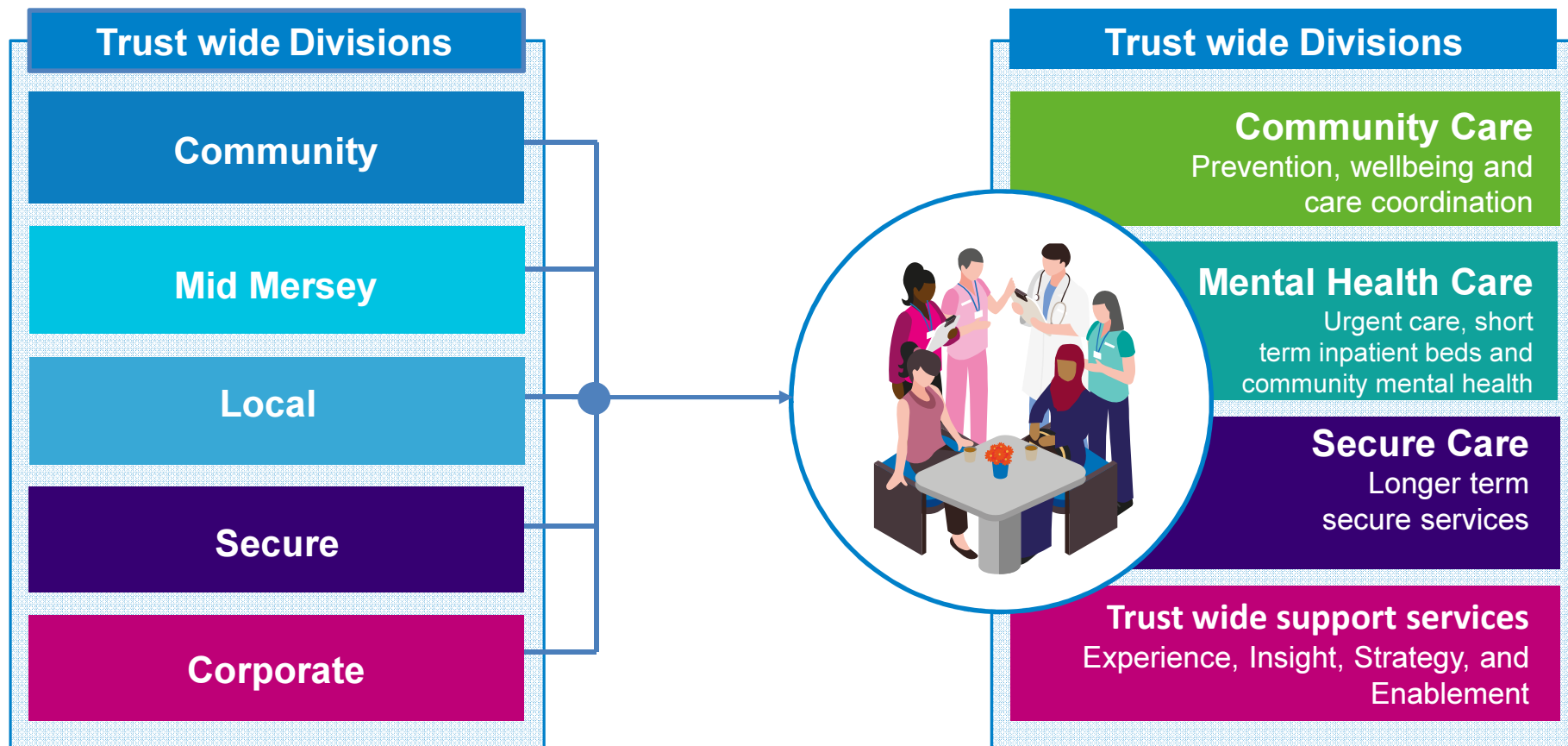
Voting Board member



Non-voting Board member

# Bringing together our expertise to support our patient and service user's journey

Initial step change, phase two to come

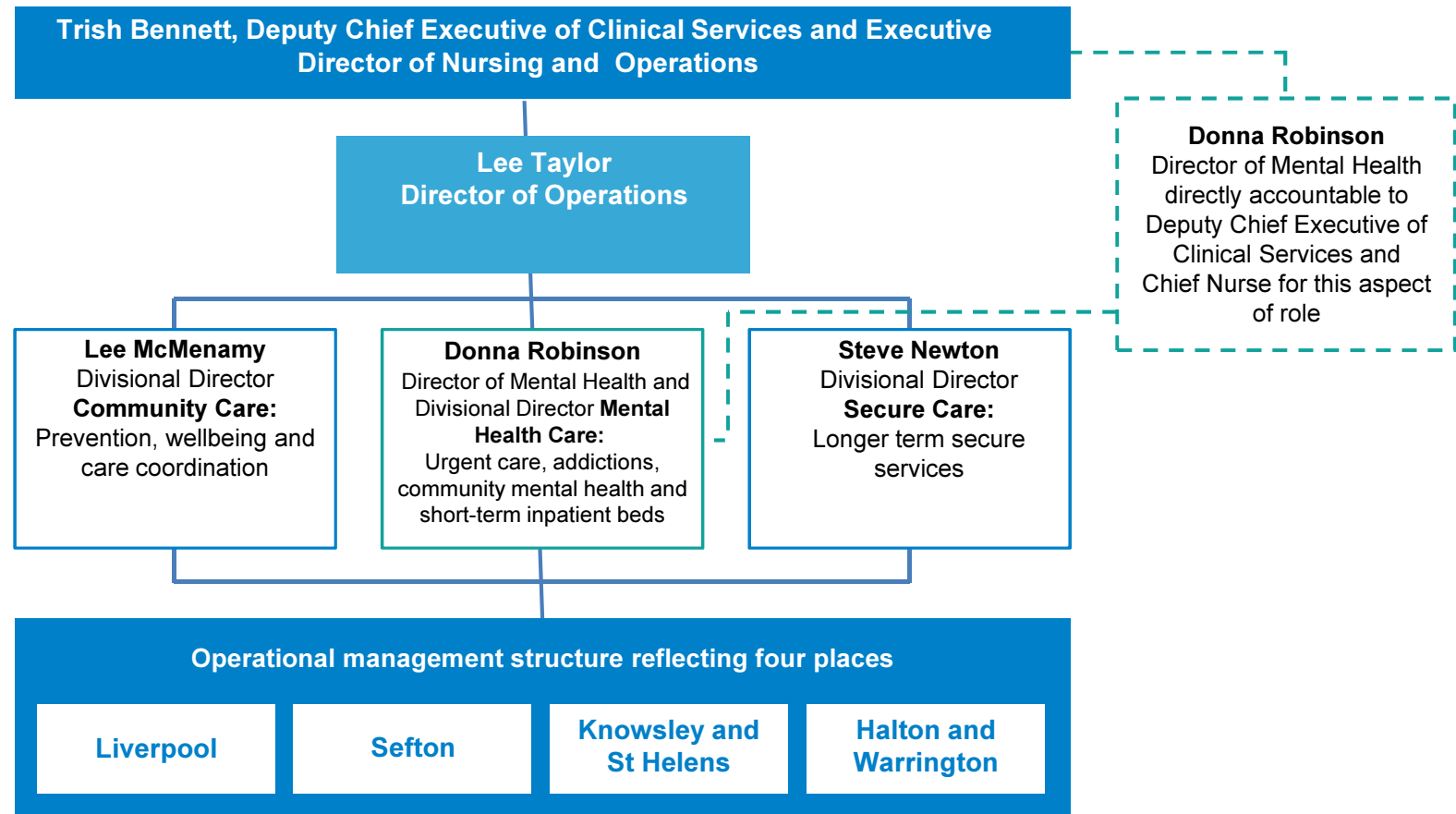


# Operational management structure with place alignments



**Mersey Care**  
NHS Foundation Trust

Community and Mental Health Services



Services delivered in place first, then speciality

# Halton Place Contacts



## Director of Operations

**Lee Taylor, Director of Operations**

Lee.Taylor@merseycare.nhs.uk



## Mental Health Care

**Donna Robinson, Mental Health Care Divisional Director**

Donna.Robinson@merseycare.nhs.uk

**Andy Williams, Deputy Divisional Director**  
(Community Mental Health Services)

Andrew.Williams@merseycare.nhs.uk

**Lyndsey Kelly, Deputy Divisional Director**  
(Inpatient Capacity and Flow)

Lyndsey.Kelly@merseycare.nhs.uk

**Lynn Hughes, Deputy Divisional Director**  
(Urgent Care)

Lynn.Hughes@merseycare.nhs.uk

**Zoe Prince, Associate Director of**  
**Nursing and Patient Experience**

Zoe.Prince@merseycare.nhs.uk

**Angela King,**  
**Associate Director of Strategic Operations**

Angela.King@merseycare.nhs.uk



**Mersey Care**  
NHS Foundation Trust

Community and Mental Health Services

# Mental Health Services- Halton

Mersey Care NHS Foundation Trust  
Presented by:

# Mersey Care Services Provided for Halton Residents



**Mersey Care**  
NHS Foundation Trust

Community and Mental Health Services



<b>Adults Community Services</b>
Admiral Nurses.
Attention Deficit and Hyperactivity Disorder (ADHD).
Life Rooms
Building Attachment and Bonds Service (BABS).
Cheshire and Mersey Specialist Perinatal Service.
Early Intervention for Psychosis.
Later Life And Memory Services.
Mental Health Urgent Response Services
Primary Care Mental Health Service
Psychological Therapies Step 4
Recovery Team
Think Wellbeing (IAPT)

<b>Learning Disability Services</b>
Autism and Mental Health Support
Byron Unit - LD
Community Learning Disability Services
LD Intensive Support
<b>Adult Inpatient Mental Health Services</b>
Bridge Ward
Weaver Ward
<b>Secure Mental Health Services</b>
Cheshire Liaison Service
Chesterton Unit - Low Secure
Integrated Anti-stalking Unit
Marlowe Unit - Low Secure
Merseyside Criminal Justice Liaison
Tennyson Unit - Low Secure
Medium Secure Inpatient Services
High Secure Inpatient Services



<b>Children's Services</b>
Baby and Infant Bonding Support
C&YP Mental Health Service Community
C&YP MHS Assess and Response
C&YP Community Eating Disorder Service
C&YP CAMHS Community
Mental Health Support Teams (Schools)



# Mental Health Care Division



Mersey Care  
NHS Foundation Trust

Community and Mental Health Services

- 3 x service lines – community Mental Health ( MH), inpatient capacity & flow, MH urgent care with named deputy directors
- Strengthened clinical & operational leadership
- Standardisation of processes – building on best practice across Mental Health, Physical Health and Learning Disability

# Mental Health Urgent Care



**Mersey Care**  
NHS Foundation Trust

Community and Mental Health Services

## **24/7 Crisis Line:**

We provide telephone support for people experiencing a mental health crisis.

This was and is an NHSEI strategy implementation as part of the 5 year forward view. It was 'planned' to go live in 2021. Due to the national pandemic, this initiative and crisis response service was requested with immediate effect following a national directive, thus it commenced Mid 2020.

## **24/7 Crisis Resolution Home Treatment Service :**

Home Treatment Team provides intensive home support for adults with mental health problems in Halton to support them to manage their conditions in a community setting and prevent readmission to hospital.

## **CORE 24:**

24/7 provision at our AED in the event of a MH crisis along side a medical condition.

## **Street Triage:**

Supports with the strain on emergency services. This service provides an RMN and police officer who will support an individual who is in crisis and direct to the appropriate service.

## **Liaison & Diversion:**

This service supports our custody suites in supporting individuals with mental health conditions working in conjunction with our partners in Cheshire Police.

## Mental Health Inpatient Beds

### **Halton estate**

Bridge ward – 17 bed acute

Weaver ward – 15 bed acute

Organic beds – provided on Hollins Park site

### **Areas to resolve**

Functional older adult beds

Organic beds

Psychiatric Intensive care

### **Quality Improvements**

QRV visits conducted on each area

Action plans in place

Estates improvements needed

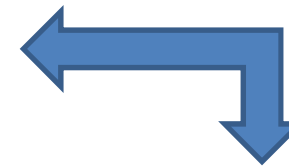
# Community Mental Health Transformation

## Halton Primary Care Mental Health Service (PCMHS)

- PCN ARRS (Annual Role Reimbursement Scheme) roles have been introduced in Halton.
- Runcorn and Widnes PCNs are covered by 3x Band 6 PCN ARRS practitioners based within GP surgeries. Line managed by Band 7 PCMHS Clinical lead.
- PCN ARRS offer:
  - assessment, signposting, support and onward referral (VCSFE sector, IAPT, other appropriate services).
  - up to 3 appointments,
  - for those with moderate mental health problems.

### New DAILY 'bridging the gap' MDT meeting live on 4/7/22.

- Provides closer link between Primary and Secondary Care
- Attended by Recovery Team Practitioners, Complex care lead, PCMHS Clinical lead/representation from PCMHS, Psychiatry, Psychology.
- Referrals to MDT are triaged and pathway decision made.
- Quick decision making process.
- Trusted assessor model.



## Halton Recovery Team

- Recovery Team are now accepting referrals from the Daily MDT for Routine Assessments.
- New low intensity intervention for those with personality related difficulties- Structured Psychological Support due to go live in September.
- 2x Band 7 Complex Care Leads, Band 6 Transformation Practitioner, 4 x Band 4 Assistant Psychologists recruited to assist in new model.
- Community Rehabilitation and Personality Disorder (RESP) Pathway developed.

# Attention Deficit Hyperactivity Disorder (ADHD) service

## Who we are?

- Halton Adult ADHD Service provides assessment, diagnosis and treatment for adults with symptoms of attention deficit hyperactivity disorder (ADHD) in Halton and Knowsley. We can also signpost you onto other mental health services if you need any extra support.
- The team is made up of staff from a range of backgrounds, including medical, nursing and occupational therapy.

## Challenges:

- The Team have seen a significant increase in referrals by approximately 3 times from the initial predicted referral rates
- Mersey Care are in discussions with the ICS place commissioner reviewing capacity and demand.

# Autism Assessment & Diagnostic Service

## Who we are?

- Autism assessment and diagnosis Team, we provide autism assessments for adults who do not have a learning disability with a registered GP in Halton, Knowsley, St Helens or Warrington. We provide person centred reports with recommendations and make appropriate onward referrals.

Our Autism and Mental Health Support team provide:

- A time limited Consultation service to mental health practitioners working with autistic service users.
- Autism Awareness and Reasonable Adjustments training ( we have currently trained over 2000 people).
- Support for Dynamic Support Database for Autistic People held within Mental Health teams

Our service currently have Support Workers, this is a 12 month proof of concept project following a successful bid to Transforming Care Programme. They aim to:

- Reduce any barriers for people with social communication difficulties accessing services (health, housing, employment, social care etc)

## Challenges

- Current lack of post diagnostic group to support our client group and their carers upon receiving a diagnosis of autism
- Clients who's primary difficulties are around their autism struggle to access an appropriate service
- Referral numbers continuously increasing, the previous years around 450, on track to exceed 1200 for this financial year
- Lack of services within the community to support autistic adults.
- Difficulties within transition from CAMHS to Adult services in terms of assessment of autism.
- Lack of provision for sensory assessments and support.

# Halton Community Learning Disability (LD) therapy team and intensive support function

The team is a specialist multidisciplinary health team including Psychology, Occupational Therapy, Speech and language therapy and Physiotherapy who work closely with social care colleagues to provide support to adults with learning disabilities and mental health difficulties, complex behavioural needs, autism spectrum conditions, epilepsy and profound and multiple learning disabilities

The team also has an intensive support function with an overall aim of providing extra support for service users in the community to reduce the need for hospital admissions when this is not really required in line with Transforming Care agenda

## Challenges:

- Recruitment challenges – particularly Clinical Psychology
- Differential configuration of Community LD team in Halton – nursing team sat within local authority

## Next steps:

- Development of Trust wide learning disability and autism strategy with investment in strong LD clinical leadership structure
- Opportunity for joint working and sharing good practice with colleagues across Merseyside within the local community LD structure
- Halton LD team have received Transforming Care Partnership funding for proof of concept around sensory integration across mid-Mersey LD teams

# Think Wellbeing Service – (IAPT)

Think Wellbeing Service is for adults aged 18 and over with common mental health problems like mild to moderate depression, anxiety and stress. We can help with other problems like panic attacks, phobias and post traumatic stress disorder. Our service is available for anyone who lives within Runcorn or Widnes or who is registered with a Halton GP.

## Challenges:

- Increase demand in patients that require interpreter and challenges around resourcing appropriate interpreter.
- Recruitment & Retention of workforce

## Next Steps:

- Long Term Conditions (to support national increase of prevalence target)- *Will work with system colleagues to implement this in a manageable way.*
- Working with other IAPT teams within the Trust and External Partners in Acute Trusts to develop Long Term Conditions treatment pathway.





**Mersey Care**  
NHS Foundation Trust

Community and Mental Health Services

# Questions

,